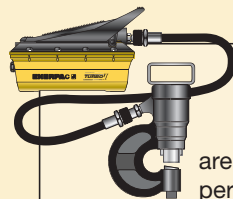


Enerpac offers an extensive range of dedicated tools for a variety of specific and flexible applications. Whatever your requirement... cutting, punching, spreading or bending... you can be sure that Enerpac has the correct tool to do your job safely and efficiently.

Featuring maintenance sets, machine lifts and load skates, as well as hole punches, pipe benders and cable cutters, Enerpac has the tools to ensure that even your most demanding applications can be undertaken with the highest degree of safety and accuracy.



Pump and Tool Sets

Selected hydraulic tools in this section are available in sets, for a perfect tool-pump match.



Hydraulic System Set-up

Check out our “Yellow Pages” section for help on system set-ups and valving configurations.

Page: 273













Bolting Tools

More Enerpac Tools can be found in the Bolting Tools section of this catalog.

Page: 202



Capacity (tons)	Tool Type and Functions	Series		Page
2.5 - 12.5	Maintenance Sets	MS		184 ►
35 - 50	Punch, Punch Sets	SP MSP STP		188 ►
16	Lifting Wedge	LW		192 ►
8.5 - 20	Hydraulic Machine Lifts	SOH		193 ►
1-80	Heavy-Duty Load Skates	ER ES ELP		194 ►
.67 - 16 (cubic feet)	Industrial Storage Cases	CM		196 ►
.75 - 1.00	Hydraulic Wedgie Spread Cylinders	A WR		197 ►
3 - 20	Hydraulic Cutterheads Cutterheads Pump Sets	WHC WHR STC		198 ►
3 - 20	Self-Contained Hydraulic Cutters	WMC		199 ►
Nominal Bore 1/2" - 4 inches	Pipe Bender Sets	STB		200 ►

▼ Shown: **MS2-10**



The Universal Hydraulic Tool Box



Maintenance Sets

Enerpac Maintenance sets are a complete assortment of accessories matched to hydraulic powered tools. Using these sets allows you to quickly configure a unique tool to meet your most difficult jobs.

Built around the Enerpac lightweight hand pump, hose and cylinder, these sets enable you to push, pull, lift, press, straighten, spread and clamp with forces up to 12.5 tons.

- All sets include Enerpac pump, hose, cylinder and gauge
- Lock-on or threaded connectors
- Complete set for almost every maintenance application



More Information






For detailed information on all included attachments, see the following pages.

Page: 186



Clamping a workpiece is just one of the many applications for the Enerpac maintenance sets. ►

▼ QUICK SELECTION CHART

Capacity using attachments* (tons)	Set Model Number						Number of Attachment Components	Weight (lbs)
2.5	MS2-4	P-142	HC-7206	RC-55	GP-10S	GA-4	33	59
2.5	MSFP-5**	P-142	HC-7206	RC-55	G2535L	GA-3	24	44
5	MSFP-10	P-392	HC-7206	RC-106	G2535L	GA-3	23	105
5	MS2-10	P-392	HC-7206	RC-106	GP-10S	GA-2	35	140
12.5	MS2-20	P-392	HC-7206	RC-256	GP-10S	GA-2	13	210
5-12.5	MS2-1020	P-392	HC-7206	RC-102, -106, -256	GP-10S	GA-2	53	350

* If no attachments are being used, capacity is double these values. Maximum operating pressure is then 10,000 psi.

** This set also includes the FZ-1055 Adaptor.

MS-Series, Maintenance Sets



CAUTION!

When cylinders are used with maintenance set attachments or components, the maximum system pressure must be limited to half the rated pressure (5,000 psi).



WARNING!

Only use attachments provided with set. Non-Enerpac attachments and longer extension tubes will reduce column strength, potentially creating unsafe conditions.

MS Series



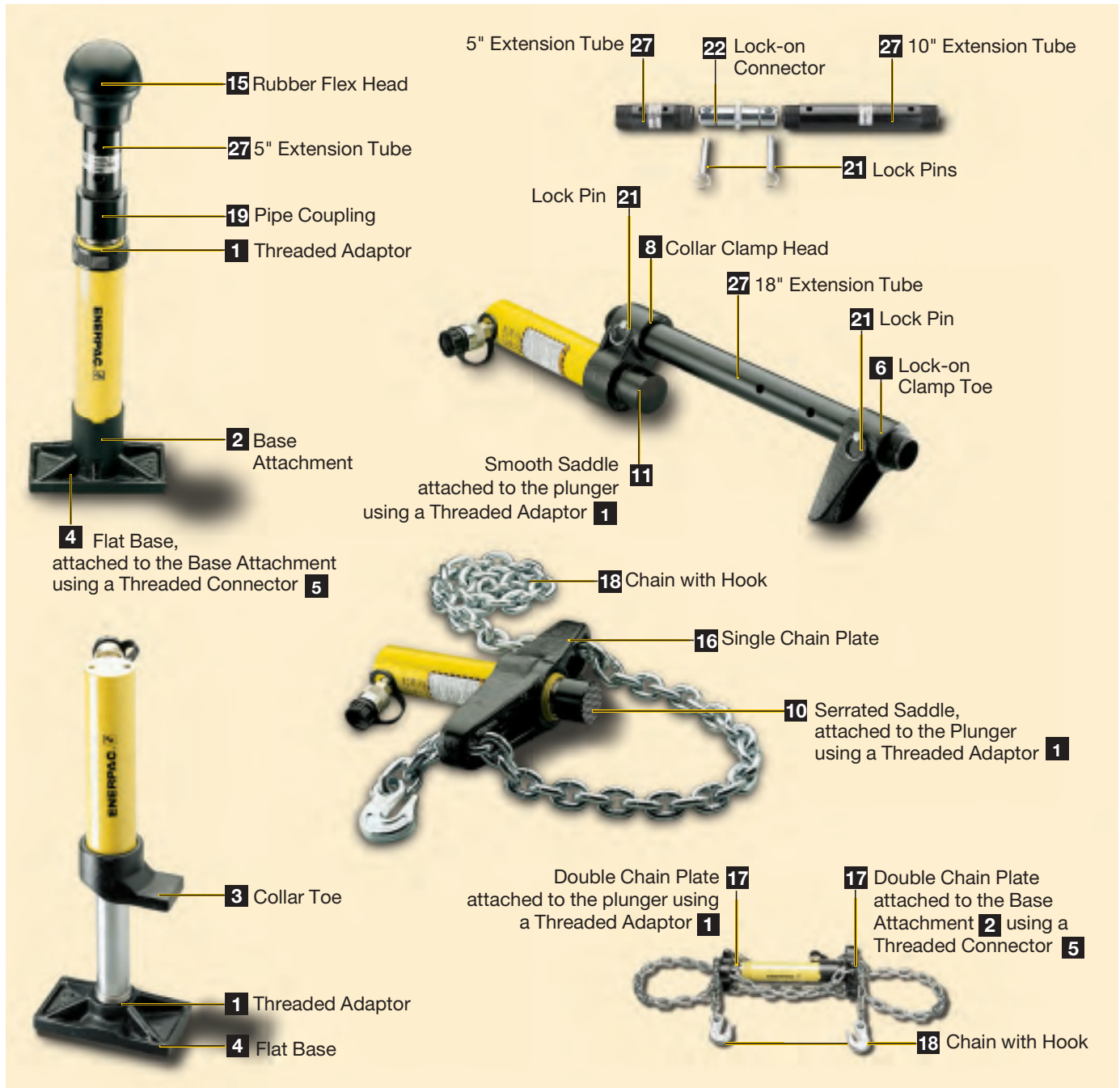
Capacity (using attachments):

2.5-12.5 tons

Max. Operating Pressure (using attachments):

5,000 psi

▼ APPLICATION EXAMPLES



MS-Series, Maintenance Sets



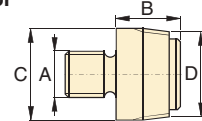
CAUTION! When cylinders are used with maintenance set attachments or components, the maximum system pressure must be limited to half the rated pressure (5,000 psi).

Note: All dimensions in inches.

Set Model No.	MS2-4	MSFP-5	MSFP-10	MS2-10	MS2-20	MS2-1020
Base/Collar/ Plunger Attachments	Capacity Using Attachments					
	2.5 tons	2.5 tons	5.0 tons	5.0 tons	12.5 tons	5-12.5 tons
Cylinder Series	RC-5	RC-5	RC-10	RC-10	RC-25	RC-10, RC-25
1	A-23	A-23	A-13	A-13	A-28	A-13 / A-28
2	A-25	A-25	A-21	A-21	A-27	A-21 / A-27
3	A-1034	A-1034	A-20	A-20	A-595	A-20 / A-595
4	MZ-4010	MZ-4010	A-14	A-14	A-243	A-14 / A-243
5	A-545	A-545	A-10	A-10	—	A-10(2x)
6	—	—	—	A-8	—	A-8
7	A-530	A-530	A-6	A-6	—	A-6
8	MZ-4011	—	—	A-192	—	A-192
9	—	—	—	A-305	—	A-305
10	A-531	A-531	A-18	A-18	—	A-18
11	—	—	—	A-185	—	A-185
12	A-532	A-532	A-15	A-15	—	A-15
13	—	—	—	—	A-607	A-607
14	A-629	A-629	A-129	A-129	—	A-129
15	A-539	A-539	A-128	A-128	—	A-128
Chains and Attach- ments for Pulling	2.5 tons	2.5 tons	5.0 tons	5.0 tons	12.5 tons	5-12.5 tons
Cylinder Series	RC-5	RC-5	RC-10	RC-10	RC-25	RC-10, RC-25
16	A-558	—	—	A-132	A-238	A-132, -238
17	—	—	—	A-5 (2x)	—	A-5(2x)
18	A-557(2x)	—	—	A-141(2x)	A-218(2x)	A-141(2x) / A-218(2x)
Tubes, Connectors and Adaptors	2.5 tons	2.5 tons	5.0 tons	5.0 tons	12.5 tons	5-12.5 tons
Cylinder Series	RC-5	RC-5	RC-10	RC-10	RC-25	RC-10, RC-25
19	A-544	—	—	A-19(2x)	A-242(2x)	A-19(2x) and A-242(2x)
20	WR-5	WR-5	WR-5	A-92	—	A-92
21	MZ-4013(4x)	MZ-4013(4x)	A-16(4x)	A-16(4x)	—	A-16(4x)
22	MZ-4007(3x)	MZ-4007(3x)	MZ-1050(3x)	MZ-1050(2x)	—	MZ-1050(3x)
23	MZ-4008(2x)	—	—	MZ-1051	—	MZ-1051(2x)
24	MZ-4009	MZ-4009	MZ-1052	MZ-1052	—	MZ-1052
25	—	—	—	A-285	—	A-285
26	A-650	—	—	—	—	—
Length: 3"	MZ-4002	MZ-4002	—	—	—	—
	5"	MZ-4003	MZ-4003	MZ-1002	MZ-1002	—
	10"	MZ-4004	MZ-4004	MZ-1003	MZ-1003	—
	—	—	—	—	—	and A-239
	18"	MZ-4005(2x)	MZ-4005	MZ-1004	MZ-1004	A-240
	—	—	—	—	—	and A-240
	23"	MZ-4006	MZ-4006	—	—	—
—	30"	—	—	MZ-1005	MZ-1005	A-241
—	—	—	—	—	—	and A-241
Case	CM-6	CM-6	CW-166	CW-166	CW-166	CW-350
Weight	59 lbs.	44 lbs.	105 lbs.	140 lbs.	210 lbs.	350 lbs.

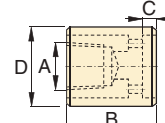
Base/Collar/Plunger Attachments

1 Threaded Adaptor



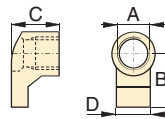
Tons	Model No.	A	B	C	D
2.5	A-23	3/4"-16 UN	1.13	1.05	3/4"-14 NPT
5.0	A-13	1"-8 UN	1.25	2.19	1 1/4"-11 1/2 NPT
12.5	A-28	1 1/2"-16 UN	1.87	2.75	2"-11 1/2 NPT

2 Base Attachment



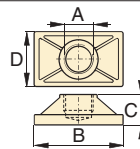
Tons	Model No.	A	B	C	D
2.5	A-25	3/4"-14 NPT	2.00	.50	1.75
5.0	A-21	1 1/4"-11 1/2 NPT	2.25	.50	2.56
12.5	A-27	2"-11 1/2 NPT	2.50	.50	3.88

3 Collar Toe



Tons	Model No.	A	B	C	D
2.5	A-1034	1 1/2"-16	2.13	1.97	1.25
5.0	A-20	2 1/4"-14	3.16	2.25	2.25
12.5	A-595	3 5/16"-12	4.06	2.03	3.18

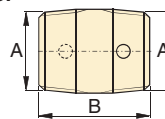
4 Flat Base



Tons	Model No.	A	B	C	D
2.5	MZ-4010	3/4"-14 NPT	4.50	1.25	2.50
5.0	A-14	1 1/4"-11 1/2 NPT	6.50	1.38	3.50
12.5	A-243*	2"-11 1/2 NPT	6.50	2.31	6.50

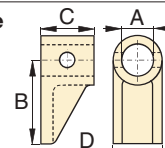
* A-243 is a round base model

5 Threaded Connector



Tons	Model No.	A	B
2.5	A-545	3/4"-14 NPT	1.38
5.0	A-10	1 1/4"-11 1/2 NPT	1.63

6 Lock-on Clamp Toe



Tons	Model No.	A	B	C	D
5.0	A-8	1.69	4.13	2.00	2.25

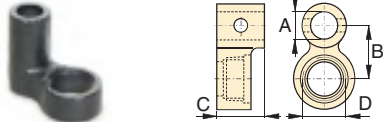
MS-Series, Maintenance Sets

7 Threaded Plunger Toe



Tons	Model No.	A	B	C	D
2.5	A-530	3/4"-14 NPT	2.25	1.00	1.33
5.0	A-6	1 1/4"-11 1/2 NPT	3.12	1.25	2.25

8 Collar Clamp Head



Tons	Model No.	A	B	C	D
2.5	MZ-4011	3/4"-14 NPT	1.95	3.00	1 1/2-16 UN
5.0	A-192	1.69	2.50	2.00	2 1/4-14 UN

9 Spreader Toe



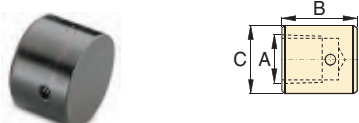
Tons	Model No.	A	B	C	D
5.0	A-305	1 1/4"-11 1/2 NPT	4.50	1.00	2.00

10 Serrated Saddle



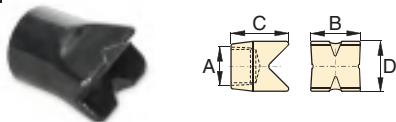
Tons	Model No.	A	B	C
2.5	A-531	3/4"-14 NPT	1.25	1.09
5.0	A-18	1 1/4"-11 1/2 NPT	2.00	1.50

11 Smooth Saddle



Tons	Model No.	A	B	C
5.0	A-185	1 1/4"-11 1/2 NPT	1.50	2.00

12 90° V-Base



Tons	Model No.	A	B	C	D
2.5	A-532	3/4"-14 NPT	1.50	1.88	1.00
5.0	A-15	1 1/4"-11 1/2 NPT	2.13	2.25	2.13

13 Plunger Base



Tons	Model No.	A	B	C
12.5	A-607	2"-11 1/2 NPT	6.56	1.53

14 Wedge Head



Tons	Model No.	A	B	C	D
2.5	A-629	3/4"-14 NPT	2.75	1.31	1.13
5.0	A-129	1 1/4"-11 1/2 NPT	4.00	2.00	1.75

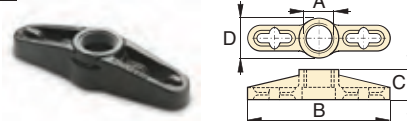
15 Rubber Flex-Head



Tons	Model No.	A	B	C
2.5	A-539	3/4"-14 NPT	1.75	2.75
5.0	A-128	1 1/4"-11 1/2 NPT	3.40	3.40

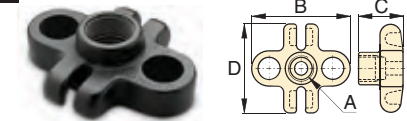
Chains and Attachments for Pulling

16 Single Chain Plate



Tons	Model No.	A	B	C	D
2.5	A-558	1 1/2"-16 UN	7.75	1.56	1.75
5.0	A-132	2 1/4"-14 UN	12.12	2.50	3.12
12.5	A-238	3 5/16"-12 UN	17.75	4.03	4.93

17 Double Chain Plate



Tons	Model No.	A	B	C	D
5.0	A-5	1 1/4"-11 1/2 NPT	6.18	2.00	4.96

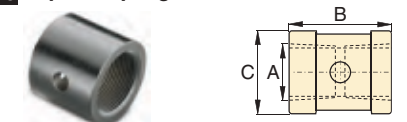
18 Chain with Hook



Tons	Model No.	Chain Length
2.5	A-557	5 feet
5.0	A-141	6 feet
12.5	A-218	8 feet

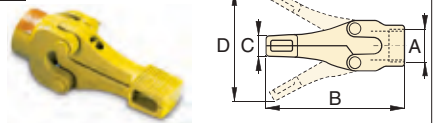
Tubes, Connectors and Adaptors

19 Pipe Coupling



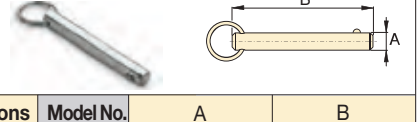
Tons	Model No.	A	B	C
2.5	A-544	3/4"-14 NPT	1.69	1.31
5.0	A-19	1 1/4"-11 1/2 NPT	1.94	2.15
12.5	A-242	2"-11 1/2 NPT	3.50	3.25

20 Spreader



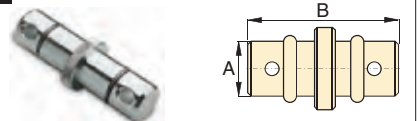
Tons	Model No.	A	B	C	D
1.0	WR-5	—	8.78	.50	3.70
1.0	A-92	2 1/4"-14 UN	9.63	1.38	6.25

21 Lock Pin



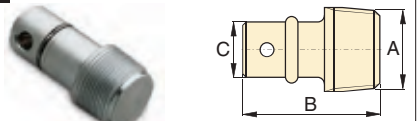
Tons	Model No.	A	B
2.5	MZ-4013	.25	2.38
5.0	A-16	.44	3.25

22 Lock-on Connector



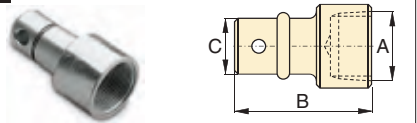
Tons	Model No.	A	B
2.5	MZ-4007	.75	3.12
5.0	MZ-1050	1.31	5.00

23 Male Lock-on Adaptor



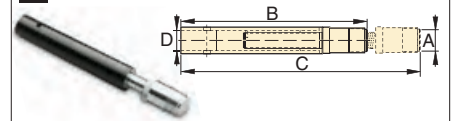
Tons	Model No.	A	B	C
2.5	MZ-4008	3/4"-14 NPT	2.38	.75
5.0	MZ-1051	1 1/4"-11 1/2 NPT	3.56	1.31

24 Female Lock-on Adaptor



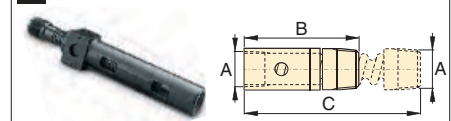
Tons	Model No.	A	B	C
2.5	MZ-4009	3/4"-14 NPT	2.56	.75
5.0	MZ-1052	1 1/4"-11 1/2 NPT	3.81	1.31

25 Adjustable Extension



Tons	Model No.	A	B	C	D
5.0	A-285	1 1/4"-11 1/2 NPT	13.20	17.37	1.30

26 Slip-Lock Extension



Tons	Model No.	A	B	C
2.5	A-650	3/4"-14 NPT	7.88	14.37

▼ Shown: **SP-35S**



- .50" thick mild steel maximum capacity
- Round, oblong and square punches and dies are available to solve your punching applications
- Long life Enerpac single-acting, spring return design
- Durable case keeps tools and dies together and provides for easy carrying and storage
- CR-400 female coupler included

Much Faster than Drilling...



Tool Kit SPK-10

Included with all 35 ton punches, this tool kit is used to remove and install the punch into the head.

Can be ordered as a replacement under model number **SPK-10**.



Ordering Information

The 35-ton hydraulic punch may be ordered by itself or as a set, including an electric, air or hand pump.

Please refer to the Quick Selection Chart information on next page.

A punch and die may also be ordered as a matched set.

▼ STANDARD PUNCH AND DIE SETS SELECTION CHART

Hole Shape	Imperial*		Metric*	
	Hole Size (in)	Bolt Size (in)	Hole Size (mm)	Bolt Size (mm)
●	.31	1/4	7,9	—
●	.38	5/16	9,5	M8
●	.44	3/8	11,1	M10
●	.53	7/16	13,5	M12
●	.56	1/2	14,3	—
●	.69	5/8	17,5	M16
●	.78	—	19,8	M18
●	.81	3/4	20,6	—
■	.31	1/4	7,9	—
■	.38	5/16	9,5	M8
■	.44	3/8	11,1	M10
■	.50	7/16	12,7	M12
○	.31 x .75	1/4	7,9 x 19	—
○	.38 x .75	5/16	9,5 x 19	M8
○	.44 x .75	3/8	11,1 x 19	M10
○	.50 x .75	7/16	12,7 x 19	M12

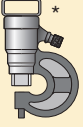
* Material thickness should **not** exceed hole diameter.

▼ SP-Series, Lightweight Hydraulic Punch – much faster than drilling.



Single-Acting, Spring Return Hydraulic Punch

▼ QUICK SELECTION CHART

	Included				Model Number	Weight (lbs)
	Punch and Die Set	Pump	Pump Type	Hose		
SP-35	—	—	—	—	SP-35	35
SP-35	Standard**	—	—	—	SP-35S	40
SP-35	Standard**	PUD-1100B	E	HC-7206	SP-35SP	70
SP-35	Metric***	—	—	—	MSP-351	40
SP-35	Standard**	P-392	H	HC-7206	STP-35H	55
SP-35	Standard**	PATG-1102N	A	HC-7206	STP-35A	63

* Punch oil capacity: 4.58 in³

Includes the following punch and die sets:

** SPD-438, SPD-688, SPD-563 and SPD-813

*** SPD-375, SPD-531, SPD-438 and SPD-688

◆ E = Electric
H = Hand
A = Air operated

**SP,
MSP,
STP
Series**



Capacity:

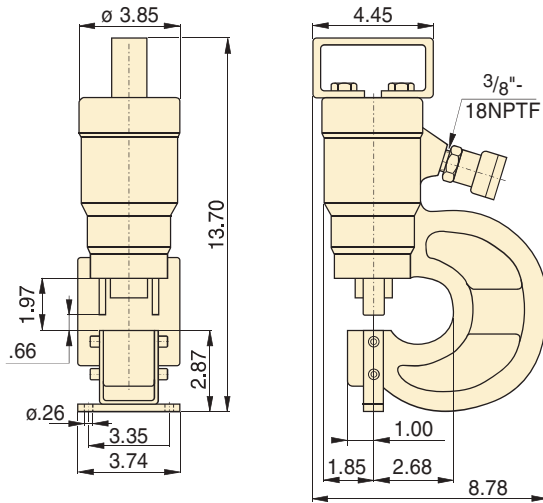
35 tons

Hole Sizes:

0.31-0.81 inch

Maximum Operating Pressure:

10,000 psi




CAUTION!

Chart below is for reference only! Maximum allowable material thickness to be punched varies with set wear.



CAUTION!

Material thickness should not exceed hole diameter.

<div>Standard Punch & Die Set</div> <div></div>	Maximum Allowable Material Thickness To Be Punched (in) (Material thickness should not exceed hole diameter.)											
	Model No.	1)	2)	3)	4)	5)	6)	7)	8)	9)	10)	11)
SPD-313	.31	.31	.25	.25	.25	.25	.13	.19	.25	.25	.25	
SPD-375	.38	.38	.31	.31	.31	.31	.19	.25	.31	.31	.31	
SPD-438	.44	.44	.38	.38	.38	.31	.19	.31	.31	.31	.31	
SPD-531	.50	.50	.44	.44	.44	.38	.25	.31	.38	.38	.38	
SPD-563	.50	.50	.50	.44	.50	.44	.25	.38	.44	.44	.44	
SPD-688	.50	.50	.50	.44	.50	.40	.25	.31	.40	.40	.40	
SPD-781	.50	.50	.50	.44	.50	.38	.25	.31	.38	.39	.38	
SPD-813	.50	.50	.50	.44	.50	.31	.19	.31	.31	.31	.31	
SPD-458	.31	.31	.25	.25	.25	.25	.13	.19	.25	.25	.25	
SPD-549	.38	.38	.31	.31	.31	.31	.19	.25	.31	.31	.31	
SPD-639	.44	.44	.38	.38	.38	.31	.19	.31	.31	.31	.31	
SPD-728	.50	.50	.44	.44	.44	.38	.25	.31	.38	.38	.34	
SPD-106	.31	.31	.25	.25	.25	.25	.13	.19	.25	.25	.25	
SPD-125	.38	.38	.31	.31	.31	.31	.19	.25	.31	.31	.31	
SPD-188	.44	.44	.38	.38	.38	.31	.19	.31	.31	.31	.31	
SPD-250	.50	.50	.44	.44	.44	.38	.25	.31	.38	.38	.38	

Steel Qualities (see table):

- 1) Mild A-7
- 2) Boiler Plate
- 3) Structural A-36
- 4) Struct Corten (ASTM A242)
- 5) Cold Rolled C-1018
- 6) Hot Rolled C-1050
- 7) Hot Rolled C-1095
- 8) Hot Rolled C-1095 Annealed
- 9) Stainless Annealed
- 10) Stainless 304 Hot Rolled
- 11) Stainless 316 Cold Rolled

▼ Shown: **SP-50100**



- Available as a complete set including electric pump and hoses
- Double-acting cylinder design for fast cycle times
- Punch and die changeover tools included
- Lifting handle for easy carrying
- Adjustable power stripper prevents movement of the metal during stripping
- CR-400 female couplers included

Cuts the Time Spent Forming Holes



Depth Stop

For simplified repetitive punching applications an adjustable Depth Stop is available.

Order model number: **SP-110.**



Foot Mounting Kit

A foot mounting kit for easy mounting of the 50 ton punch to workbench or fixture is available.

Please order: **SP-120.**



Ordering Information

The 50-ton Hydraulic Punch may be ordered by itself or as a set with an electric pump. A punch and die may be ordered as a matched set. Please refer to the selection chart information.




◀ Save time using this 50-ton Enerpac Punch.

▼ Shown below is the 50-ton punch with SP-120 and SP-110 assembled.



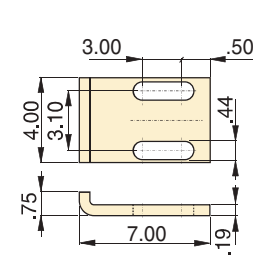
50-Ton Hydraulic Punch

▼ QUICK SELECTION CHART PUNCH SETS

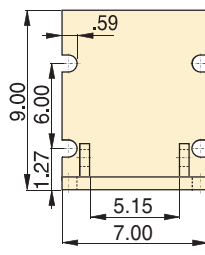
Model Number Punch*	Included			Set Model Number	Weight (lbs)
	Punch & Die Sets 	Pump	Hose (2x)		
SP-50	All**	—	—	SP-50100	255
SP-50	All**	ZE4410SB-N	HC-7206	SP-5000	384

* Punch Oil Capacity:
Advance: 17 in³
Retract: 14 in³

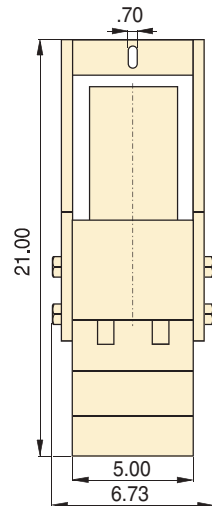
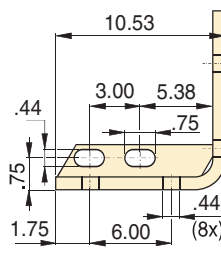
** All standard sets from chart below.



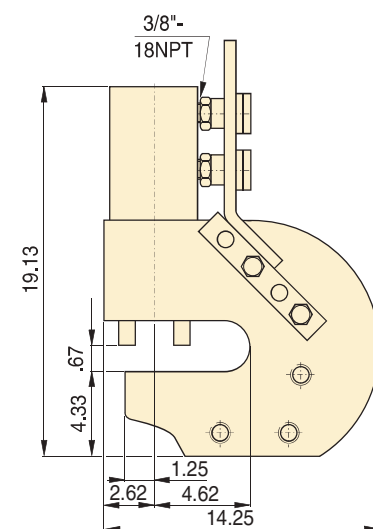
SP-110



SP-120



SP-50



SP Series



Capacity:

50 tons

Hole Sizes:

0.53-1.03 inches

Maximum Operating Pressure:

10,000 psi



CAUTION!

Material thickness should not exceed hole diameter.




CAUTION!

Chart below is for reference only! Maximum allowable material thickness to be punched varies with set wear.

Steel Qualities (see table below):

- 1) Mild A-7
- 2) Boiler Plate
- 3) Structural A-36
- 4) Struct Corten (ASTM A242)
- 5) Cold Rolled C-1018
- 6) Hot Rolled C-1050
- 7) Hot Rolled C-1095
- 8) Hot Rolled C-1095 Annealed
- 9) Stainless Annealed
- 10) Stainless 304 Hot Rolled
- 11) Stainless 316 Cold Rolled

▼ STANDARD PUNCH AND DIE SELECTION CHART

Hole Shape	Hole Size (in)	Bolt Size (in)	Standard Punch and Die Set  Model Numbers	Maximum Allowable Material Thickness To Be Punched										
				(in)										
				1)	2)	3)	4)	5)	6)	7)	8)	9)	10)	11)
●	.53	1/2	SP-150	.53	.53	.53	.53	.53	.49	.32	.40	.49	.49	.49
●	.66	5/8	SP-170	.56	.56	.56	.50	.56	.51	.32	.40	.51	.51	.51
●	.78	3/4	SP-190	.56	.56	.56	.50	.56	.49	.32	.40	.49	.50	.49
●	.91	7/8	SP-121	.56	.56	.56	.50	.56	.35	.22	.35	.35	.35	.35
●	1.03	1	SP-123	.56	.56	.56	.44	.56	.31	.19	.31	.31	.31	.31

▼ Shown: LW-16 with SB-2 and optional LWB-1



- Requires .39 inch access gap
- Lifting force 16 ton at 10,000 psi hydraulic pressure
- Automatic mechanical retraction (single acting)
- Securely raises or lowers 16 tons with no slippage
- Lifting wedge LW-16 includes safety block SB-2
- Use in tandem to lift 32 tons, or 64 tons
- .83 inch of vertical lift from each step (maximum lift to 2.72 inches with optional LWB-1 stepped block)

LW Series

Minimum Clearance:

.39 inches

Maximum Lift Height:

2.02*-2.72* inches

Maximum Force:

16 tons

Maximum Operating Pressure:

10,000 psi



Best Match Manual Pump

To power your Enerpac Lifting Wedge, The Enerpac **P-392** Hand Pump or **P-392FP** Foot Pump is an ideal choice.

Page: **192**



Split-Flow Manifolds

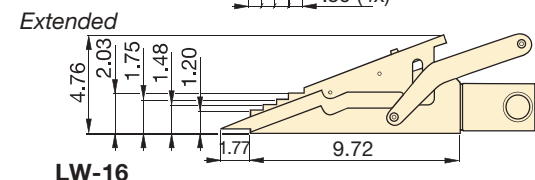
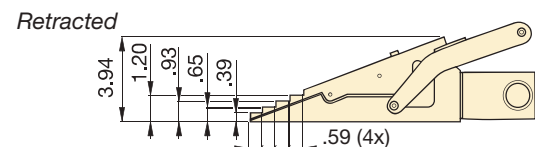
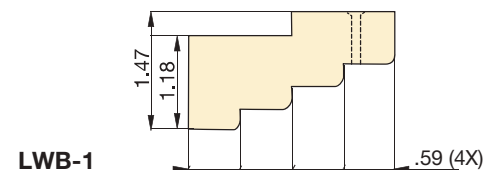
Split Flow Valves to control two or four lifting wedges simultaneously.

AM-21 with 3 ports 3/8" NPTF.

AM-41 with 5 ports 3/8" NPTF.

Page: **136**

▼ For lifting heavy equipment with minimum floor clearance the LW-16 is the ideal tool.



Max. Lifting Force (ton)	Model No.	Minimum Clearance Gap (in)	Max. Lift per Stage (in)	Max. Lifting Height (in)	Max. Lifting Height Using Stepped Block (in)	Oil Capacity (in ³)	Weight (lbs)
16	LW-16	.39	.83	2.02	2.72	4.75	15.4

* Use optional stepped block LWB-1 to increase wedge lifting height 1.18 inches.

▼ Shown from left to right: SOH-10-6, SOH-23-6



SOH Series

Lifting Capacity:

8.5-20 tons

Stroke:

5.39-6.18 inches

Toe Clearance:

0.79-1.18 inches

Maximum Operating Pressure:

10,000 psi



ER-Series Load Skates

In combination with the Enerpac Lifting Wedge we recommend Load Skates for moving heavy loads.

Page: 194

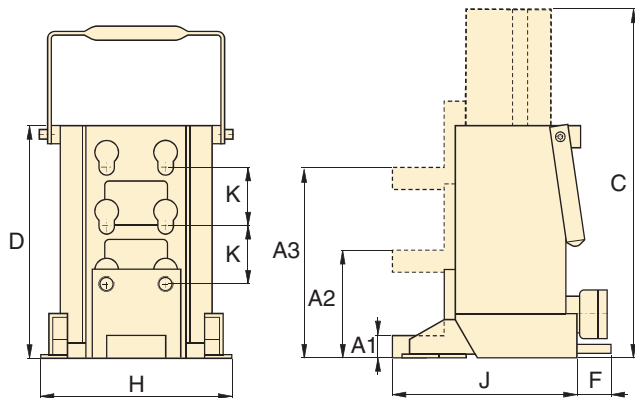


RSM Flat-Jac®

Low height, single acting spring-return cylinders are ideal for space restricted applications.

Page: 22

- For lifting heavy equipment with minimum available access
- Remote operation of hydraulic pump enhances safety
- Low-height lifting toe
- Precision guided to reduce friction and isolate cylinder from side-loads
- Two extendable support feet provide extra stability
- Includes RC-Series cylinder with CR-400 coupler

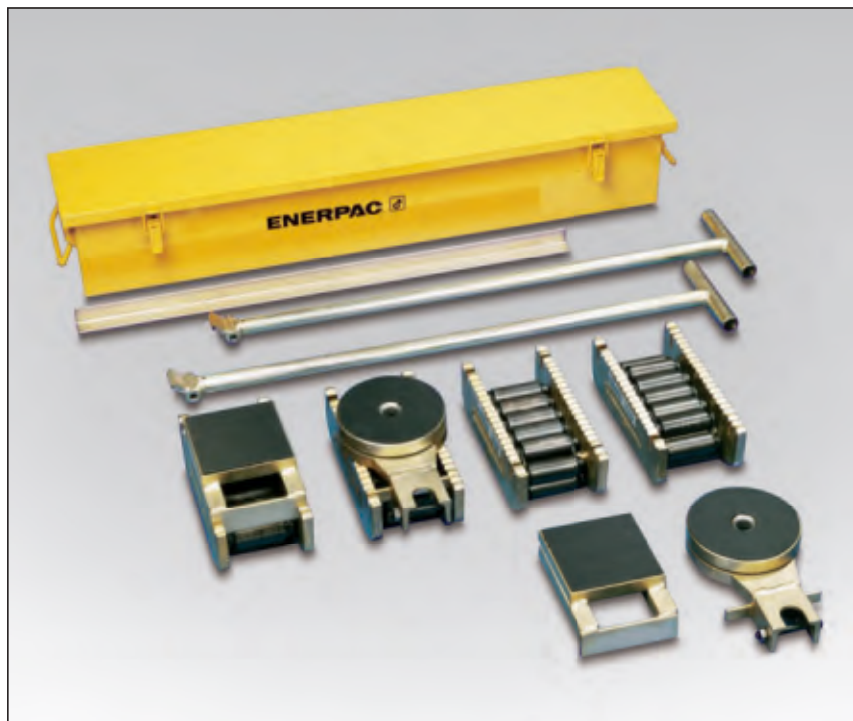


▼ Heavy transport using Load Skates. The machine is first lifted, using SOH-Series Enerpac Machine Lifts.



Capacity (ton)	Toe Clearance with Cylinder Retracted (in)			Stroke (in)	Model Number	Oil Capacity (in ³)	Dimensions (in)						Weight (lbs)
	Minimum A1	Central A2	Maximum A3				Total Ext. Height C	Total Body Height D	F	H	J	K	
8.5	.79	3.74	6.69	5.39	SOH-10-6	13.7	17.00	11.61	—	7.48	8.46	2.95	59.2
20	1.18	4.33	7.48	6.18	SOH-23-6	32.0	18.58	12.40	2.56	10.24	9.84	3.15	99.2

▼ Shown: Set ERS-20



Move Heavy Loads Easily and Safely



Sets (see table) include all components necessary to handle a variety of applications. Two **ELB-1** link-up bars, two **ERH-1** handles (34.4" long) and one **EMB-1** metal box are included. Optional long handle **ERH-2** (46.4") also available.

- Rugged and sturdy construction for long life
- Low profile construction for increased stability
- Low rolling-resistance allows for easy load movement
- Attachable load leveling plates and swivel turntables for turning corners



Lifting Wedge and Machine Lifts

To place the Load Skates, the load must first be lifted. This can be done easily and safely using Enerpac Lifting Wedge or Machine Lifts.

Page: 194

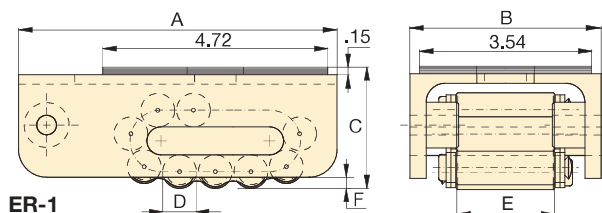
▼ Heavy transport using Load Skates. The machine is first lifted, using SOH-Series Enerpac Machine Lifts.



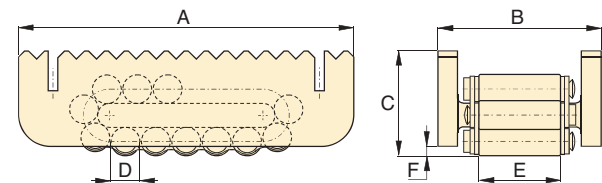
▼ Chemical tank transportation: The first inch(s) the load was lifted with an RCS-Series Low Height Cylinder and then moved onto load skates for transportation.



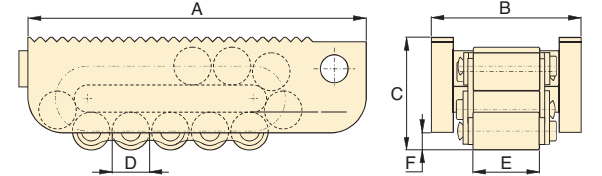
Heavy-Duty Caterroller™ Load Skates



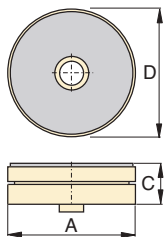
ER-1



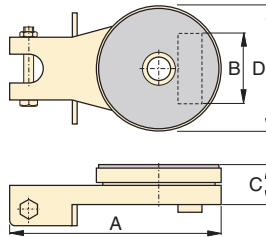
ER-10, ER-15, ER-30



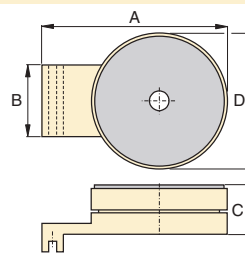
ER-60, ER-80



Turntable Swivel
ES-1



Turntable Swivel
ES-10, ES-15, ES-30



Turntable Swivel
ES-60, ES-80

**ELP,
ER,
ES
Series**

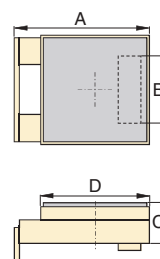


Maximum Carrying Capacity:

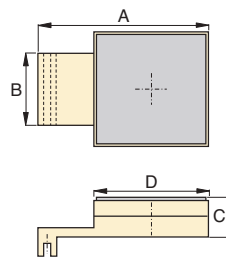
80 tons

Load Skates may be ordered separately or as a matched set.

Set Capacity*	Set Model Number	Load Skates (4)	Turntable Swivels (2)	Leveling Plates (2)	Weight Including handles and metal box (lbs)
(tons)					
20	ERS-20	ER-10	ES-10	ELP-10	110
30	ERS-30	ER-15	ES-15	ELP-15	123
60	ERS-60	ER-30	ES-30	ELP-30	167


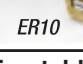

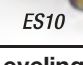




Leveling Plate
ELP-10
ELP-15
ELP-30



Leveling Plate
ELP-60
ELP-80

* Sets are designed to enable two skates to take full load for extra safety on uneven floor surfaces

	Capacity (ton)	Model Number	Dimensions (inch)						Contact Rolls per Skate	Rollers per Skate	Weight (lbs)
			A	B	C	D	E	F			
Load Skates  ER1  ER10	1	ER-1	6.69	3.94	2.56	.71	2.00	.24	4	11	8.4
	10	ER-10	8.27	3.94	2.63	.71	2.00	.24	5	15	11.5
	15	ER-15	8.69	4.45	2.95	.94	2.38	.39	4	13	16.0
	30	ER-30	10.63	5.13	3.63	1.18	2.69	.39	4	13	28.6
	60	ER-60	15.00	6.63	4.94	1.65	3.00	.63	4	13	70.4
Turntable Swivel  ES1  ES10	80	ER-80	20.88	7.19	5.75	1.97	3.38	.75	6	17	134.2
	1	ES-1	8.15	—	1.02	3.54	—	—	—	—	2.4
	10	ES-10	8.66	2.87	1.65	5.12	—	—	—	—	8.1
	15	ES-15	8.66	3.39	1.65	5.12	—	—	—	—	8.1
	30	ES-30	9.84	3.78	1.89	5.91	—	—	—	—	11.7
Leveling Plate 	60	ES-60	10.83	4.49	2.40	7.48	—	—	—	—	30.1
	80	ES-80	14.17	5.04	2.40	8.66	—	—	—	—	41.6
	10	ELP-10	5.87	2.87	1.65	4.72	—	—	—	—	8.1
	15	ELP-15	5.87	3.39	1.65	4.72	—	—	—	—	8.1
	30	ELP-30	7.01	3.78	1.89	5.12	—	—	—	—	11.6
	60	ELP-60	10.63	4.49	2.40	7.09	—	—	—	—	30.4
	80	ELP-80	13.78	5.04	2.40	7.87	—	—	—	—	41.4

▼ Shown: **CM-16**



CM Series

Case Size:

.67-16 Cubic Ft.

Protect your Equipment



Maintenance Sets

Enerpac Maintenance sets are a complete assortment of accessories matched to hydraulic powered tools. Using these sets allows you to quickly configure a unique tool to meet your most difficult jobs.

Built around the Enerpac lightweight hand pump, hose and cylinder, these sets enable you to push, pull, lift, press, straighten, spread and clamp with forces up to 12.5 tons.



Hydraulic Pullers

These hydraulic pullers eliminate time-consuming and unsafe hammering, heating or prying.

Damage to parts is minimized through the use of controlled hydraulic power.

- **Protect your equipment from dust, water, grease and dirt**
- **Reduce losses on the jobsite, maintenance area or shop**
- **Durable steel, painted with rust-resistant primer and finished in durable enamel**
- **Heavy-duty hinges and lifting handles**
- **Lockable**

▼ When not storing the lifting system, this heavy-duty storage case doubles as a work station.



Page: **172**

Case Size (ft ³)	Model Number	Dimensions L x W x H (in)	Thickness (in)	Weight (lb)
.67	CM-6	23.5 x 7 x 7	.035	15.4
1.13	CM-1	25 x 11.5 x 6.6	.035	17.6
4.50	CM-4	31 x 18 x 14	.059	35.3
7.50	CM-7	47.5 x 15 x 18	.074	125.7
16.00	CM-16	48 x 24 x 24	.059	121.3

Hydraulic Wedgie and Spread Cylinders

▼ Shown clockwise from top: **WR-15, WR-5, A-92**



A, WR Series

Capacity:

0.75-1.00 ton

Tip Clearance:

0.50-1.38 inches

Maximum Spread Range:

3.70-11.50 inches

Maximum Operating Pressure:

10,000 psi



RC-Series DUO Cylinders

10 ton RC-Series DUO cylinders (except RC-101) fit into A-92 Spreader Attachment.

Page: 6

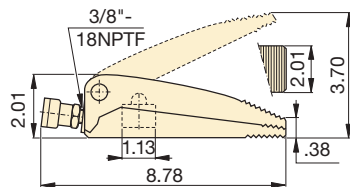


Best Match Hand Pump

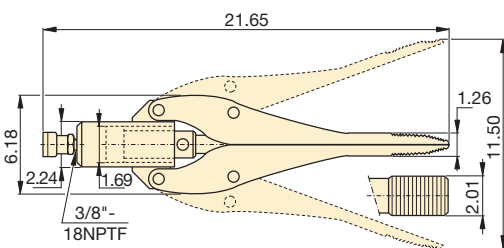
To power your WR5 and WR15 the **P-392** hand pump is an ideal choice.

Page: 70

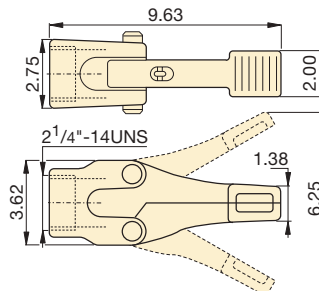
- Single-acting, spring return
- **WR-15:** For long stroke spreading applications
- **WR-5:** For use in very confined work areas
- **A-92:** Spreader attachment screws onto RC-Series 10-ton cylinders (except RC-101)*



WR-5



WR-15

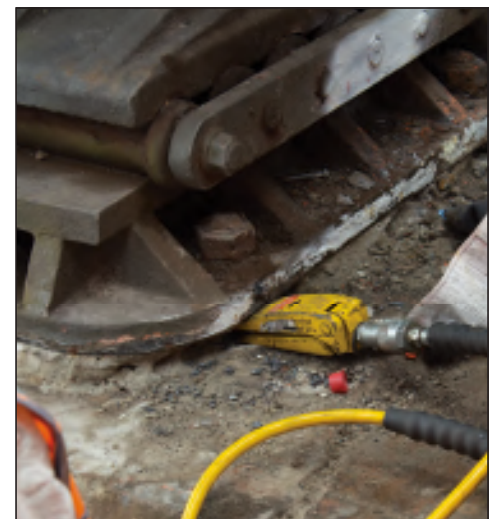


A-92*

Spreader Capacity	Tip Clearance	Model Number	Maximum Spread	Cylinder Effective Area	Oil Capacity	Wt.
(ton)	(in)		(in)	(in ²)	(in ³)	(lbs)
1.00	.50	WR-5	3.70	1.00	.61	5.0
.75	1.26	WR-15	11.50	2.25	3.91	25.0
1.00	1.38	A-92*	6.25	—	—	8.0

* Maximum system pressure must be limited to half the rated pressure (5000 psi)

▼ A WR-5 Wedgie cylinder is used to loosen a bridge bearing.



▼ Shown from left to right: **WHC-3380, WHC-750**



- Single acting, spring return on all models, except WHR-1250
- Guillotine action for efficient operation
- Lifting handles on larger models
- Carrying bag included for easy carrying and tool protection
- Ideal for use with most Enerpac pumps featuring 3-way valve or dump valve and 10,000 psi pressure rating (except WHR-1250, which requires 4-way valve)
- CR-400 coupler and dust cap included on all models

WHC, WHR, WCB, STC Series

Capacity:

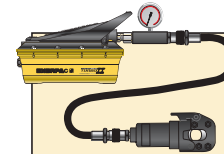
3-20 tons

Cutting Capacity:

0.50-4 inches

Maximum Operating Pressure:

10,000 psi



Cutterhead Sets

Hydraulic Cutterheads are available as sets (pump, tool and hose).

Cutter Model Number	Pump Model Number	Set Model Number *
WHC-750	P-392	STC-750H
WHC-750	P-392FP	STC-750FP
WHC-750	PATG-1102N	STC-750A
WHC-1250	P-392	STC-1250H
WHC-1250	P-392FP	STC-1250FP
WHC-1250	PATG-1102N	STC-1250A

*H = Hand Pump, A = Air Operated Pump
FP = Foot Pump

▼ Steel rope is easily cut with the smooth guillotine action of an Enerpac cutterhead.



▼ Selection Chart Maximum Cutting Capacities (diameter in inches)

Cutter Head Operation	Capacity (ton)	Model Number	Oil Capacity (in ³)	Length (in)	Steel Wire Rope, Hemp-core or IWRC 6x7 6x12 6x19	Round Bar				Wire Strand				Cable		Wt. (lbs)	Replacement Blades
						Copper Wire or Bar	Aluminum Wire or Bar	Soft Steel Bolts	Reinforcing Bar	Bare Copper Wire Strands	Bare Aluminum Wire Strands	ACSR	Guy Steel Wire Strands	Telephone Cable CPP	Underground Cable (Power)		
Single-acting	4	WHC-750*	1.2	5.0	.63	.75	.75	.56	.50***	.75	.75	.75	.63	☆	☆	7	WCB-750
	20	WHC-1250*	8.2	11.00	1.25	1.25	1.25	1.25	1.00	1.25	1.25	1.25	.88	☆	☆	25	WCB-1250
	13	WHC-2000	7.3	15.00	1.00	1.25	1.25	.88	☆	2.00	2.00	2.00	.75	☆	2.00	23	WCB-2000
	3	WHC-3380	4.0	19.00	☆	☆	☆	☆	☆	3.00	3.00	☆	☆	3.38	3.38	20	WCB-3380
	8	WHC-4000	8.4	24.00	☆	☆	☆	☆	☆	3.50	3.50	☆	☆	4.00	4.00	32	WCB-4000
D/A**	20	WHR-1250	7.5	16.50	1.25	1.25	1.25	1.25	1.00	1.25	1.25	1.25	.88	☆	☆	26	WCB-1250

* Available in sets. ** D/A = Double-acting *** Low Alloy

☆ Will not cut designated material

Self-Contained Hydraulic Cutters

▼ Shown from left to right: **WMC-2000, WMC-750**



- Rotating heads for operator convenience
- Guillotine action (except WMC-1000) for efficient operation
- Carrying bag included for easy carrying and tool protection
- Velcro straps to secure handles on larger models for easy transportation
- Spring return on all models
- Lightweight, self-contained tool, can be used anywhere

WMC, WCB Series

Capacity:

3-20 tons

Maximum Material Diameter:

0.38-3.38 inches

Maximum Operating Pressure:

10,000 psi



Replacement Blades

To order 60-62HRC hardened replacement blades use one of the model numbers shown below.

For Cutter Model Number	Order Blade Model Number
WMC-580	WCB-750
WMC-750	WCB-750
WMC-1000	WCB-1000
WMC-1250	WCB-1250
WMC-1580	WCB-1580
WMC-2000	WCB-2000
WMC-3380	WCB-3380



Caution!

A "☆" in the charts on these pages means that this hydraulic cutter is not designed to cut this size or type of material. Any attempt to do so may result in personal injury and damage to the unit and will void the warranty.

▼ Selection Chart Maximum Cutting Capacities (diameter in inches)

Capacity (ton)	Model Number	Length (in)	Steel Wire Rope, Hemp-core or IWRC 6x7 6x12 6x19	Round Bar				Wire Strand					Cable		Weight (lbs)
				Copper Wire or Bar	Aluminum Wire or Bar	Soft Steel Bolts	Reinforcing Bar	Bare Copper Wire Strands	Bare Aluminum Wire Strands	ACSR Wire Strands	Guy Steel Wire Strands	Guy Steel Wire Strands	Telephone Cable CPP	Underground Cable (Power)	
								6x7			1x7	1x19			
4	WMC-580	15.00	.63	.63	.63	.63	.38	.63	.63	.63	.56	.56	☆	.63	8
4	WMC-750	15.00	.75	.75	.75	.69	.50***	.75	.75	.75	.56	.56	☆	.75	8
20	WMC-1000*	26.75	☆	.75	.75	.75	.75	☆	☆	☆	☆	☆	☆	☆	25
20	WMC-1250	26.75	1.25	1.25	1.25	1.25	.88	1.25	1.25	1.25	.88	.88	☆	☆	23
6	WMC-1580	22.00	.75	.75	.75	.75	☆	1.50	1.50	1.50	.63	.63	☆	1.63	15
13	WMC-2000	24.75	1.00	1.25	1.25	.88	☆	2.00	2.00	2.00	.75	.75	☆	2.00	24
3	WMC-3380	26.00	☆	☆	☆	☆	☆	3.00	3.00	☆	☆	☆	3.38	3.38	22

* Cuts .50" alloy chain grade 70 (type G7 transport or tie-down) or grade 80 (for overhead lifting applications)

☆ Will not cut designated material

*** Low Alloy

▼ Shown: **STB-101H**



Quick, Safe and Wrinkle-free Bending

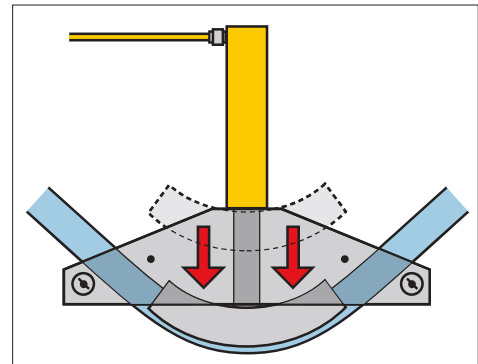


'One Shot' and 'Sweep'

One shot shoes give up to a 90° bend without resetting.


Sweep shoes are used where increased radii are required for multiple parallel pipe installations.

- Makes smooth, wrinkle-free bends
- Sets include cylinder, hose and manual, air or electric pump
- Sets are also available without hydraulics
- Bending shoes and bending frame are lightweight, heat-treated aluminum
- All sets include sturdy steel storage case
- All sets include BZ-12091 angle indicator for accurate bending
- BZ-12377 Shoe Lock Pin included in every set
- Eject-O-Matic™ benders (STB-202 models) use a double-acting cylinder to eject pipe from the bending shoe



▲ Typical one shot bending operation.

▼ SELECTION CHART

Pipe Range		Set Model Number	Hand Pump*	Air Pump*	Electric Pump*		Cylinder*	Hose*	Steel Case*	Saddle	Weight (includes steel case)
Nominal Size (in)											(lbs)
One Shot	Sweep										
½ - 2	-	STB-101X	-	-	-		-	-	CM-4	A-12	88
		STB-101N	-	-			RC-1010	HC-7206	CM-4	A-12	105
		STB-101H	P-392	-	-		RC-1010	HC-7206	CM-4	A-12	114
		STB-101A	-	PATG-1102N	-		RC-1010	HC-7206	CM-4	A-12	119
		STB-101B	-	-	PUJ-1200B ²⁾		RC-1010	HC-7206	CM-4	A-12	127
1 - 2	2½ - 4	STB-221X	-	-	-		-	-	CM-7	A-29	229
		STB-221N	-	-	-		RC-2510	HC-7206	CM-7	A-29	263
		STB-221H	P-80	-	-		RC-2510	HC-7206	CM-7	A-29	286
1¼ - 4	-	STB-202X ¹⁾	-	-	-		-	-	CM-7	A-29	316
		STB-202N ¹⁾	-	-	-		RR-3014	HC-7206 (2x)	CM-7	A-29	383
		STB-202B ¹⁾	-	-	ZU4408SB ²⁾		RR-3014	HC-7206 (2x)	CM-7	A-29	467

* See corresponding sections of this catalog for more detailed specifications.

¹⁾ Eject-O-Matic™ ²⁾ For 230 volt applications change the last digit of Set Model Number from "B" to "E".

Pipe Bender Sets

Nominal pipe size (outside dia.) (in)	Wall Thickness (in)	Schedule Pipe *	Pipe Bend Inside Radius (in)	STB-101 ½ - 2 One Shot	STB-221 1-2 One Shot 2½ - 4 Sweep	STB-202 1¼ - 4 One Shot	One Shot Bending Shoe Model Number	Sweep Bending Shoe Model Number
½ (.840)	.109	40	2 7/8	Yes	–	–	BZ-12011	–
	.147	80		Yes	–	–		
	.187	160		WS	–	–		
	.294	DEH		WS	–	–		
¾ (1.050)	.113	40	4	Yes	–	–	BZ-12021	–
	.154	80		Yes	–	–		
	.218	160		WS	–	–		
	.308	DEH		WS	–	–		
1 (1.315)	.133	40	5 1/8	Yes	Yes	–	BZ-12031	–
	.179	80		Yes	Yes	–		
	.250	160		WS	WS	–		
	.358	DEH		–	WS	–		
1¼ (1.660)	.140	40	6 7/8	Yes	Yes	Yes	BZ-12041	–
	.191	80		Yes	Yes	Yes		
	.250	160		WS	WS	Yes		
	.342	DEH		–	WS	WS		
1½ (1.900)	.145	40	7 7/8	Yes	Yes	Yes	BZ-12051	–
	.200	80		Yes	Yes	Yes		
	.281	160		WS	WS	Yes		
	.400	DEH		–	WS	WS		
2 (2.375)	.154	40	8 7/8	Yes	Yes	Yes	BZ-12061	–
	.218	80		–	Yes	Yes		
	.343	160		–	WS	Yes		
2½ (2.875)	.203	40	9 1/2	–	Yes	Yes	BZ-12341	BZ-12382
	.276	80		–	WS	Yes		
	.375	160		–	WS	Yes		
3 (3.500)	.216	40	11 1/4	–	Yes	Yes	BZ-12351	BZ-12383
	.300	80		–	WS	Yes		
3½ (4.000)	.226	40	15 1/2	–	Yes	Yes	BZ-12391	BZ-12384
	.318	80		–	WS	Yes		
4 (4.500)	.237	40	17 3/4	–	Yes	Yes	BZ-12392	BZ-12385
	.337	80		–	–	Yes		

*Schedule Pipe: 40 = Standard; 80 = Extra Heavy; 160 = Double Extra Heavy;

DEH = Double Extra Heavy (slightly thicker than 160);

WS = Can be bent by using wider spacing for swivel shoes.

STB Series



Nominal Pipe Size:

0.5-4 inches

Maximum Bend Angle:

90°

Maximum Operating Pressure:

10,000 psi



All bender sets are designed to bend mild steel pipe. For other material please consult Enerpac.

Frame Assembly	Pivot Pin**	Pivot Shoes**	One Shot or Sweep ³⁾ Bending Shoes included								Set Model Number
BZ-12371	BZ-12375	BZ-12071	BZ-12011	BZ-12021	BZ-12031	BZ-12041	BZ-12051	BZ-12061	–	–	STB-101X
											STB-101N
											STB-101H
											STB-101A
											STB-101B
BZ-12372	BZ-12376	BZ-13401	BZ-12031	BZ-12041	BZ-12051	BZ-12061	BZ-12382 ³⁾	BZ-12383 ³⁾	BZ-12384 ³⁾	BZ-12385 ³⁾	STB-221X
											STB-221N
											STB-221H
BZ-12374	BZ-12376	BZ-13401	–	BZ-12041	BZ-12051	BZ-12061	BZ-12341	BZ-12351	BZ-12391	BZ-12392	STB-202X ¹⁾
											STB-202N ¹⁾
											STB-202B ¹⁾

³⁾ Shoes are Sweep, all other shoes are One Shot.

** Sets include two pivot pins and two pivot shoes.